



BIODIVERSITY POLICY

1. POLICY STATEMENT

- 1.1 Situated in an ideal location to the north and east of the County Town of Ipswich, the Parish of Rushmere St Andrew borders heathland, local nature reserves, woodland and farmland. Whilst most residents live in semi-suburban properties, a large part of the parish continues to be a typical rural village with ponds and quiet village lanes.
- 1.2 In 2022 the Neighbourhood Plan was “made”. The importance of the environment was recognised and continues to set the way forward with a strong emphasis on maintaining a sustainable and healthy setting for nature to thrive.
- 1.3 The basis of this policy is that everyone has a part to play. Nor do we sit in isolation. With so many “borders” it is important to relate to neighbouring environments and be part of the “bigger picture”. The parish belongs to the Community Partnership of East Suffolk Council and is a founder member of the Environmental Forum.

2. AIMS

- 2.1 This biodiversity policy sets out to promote the protection, conservation and sustainable use of biologically diverse ecosystems and habitats in the parish (and beyond).
- 2.2 The aim is to create continued, significant public benefits and contribute to the social well-being of residents.

3. PARISH RESPONSIBILITY

- 3.1 Rushmere St Andrew Parish Council is responsible for maintaining a number of locations within the parish. These include local ponds, the lawn cemetery, allotments, lanes, footpaths, hedgerows, tree belts, play parks and public open spaces. Some of these locations are exclusively in the ownership of the parish and are identified in maps in Appendix One.
- 3.2 Having acquired ownership, or the rights to do so, the parish has commenced development of “rewilding areas” in various locations highlighted in Appendix Two.
- 3.3 The Parish Council works closely with East Suffolk Council in the maintenance and protection of two vital Local Nature Reserves (LNR). The Sandlings LNR borders Rushmere Common and forms a significant part of the green environment within the parish. This LNR runs seamlessly into the Mill Stream LNR. The boundary of the parish at that location is the water course which runs through the Mill Stream LNR forming a border with Kesgrave and Foxhall. The LNRs are identified in Appendix Three.



Parish Council

Rushmere St Andrew

www.rushmerestandrew-pc.gov.uk

3.4 The Parish Council is aware of the proposal to develop a parcel of land within in parish to accommodate approximately 150 dwellings. This proposed development is set alongside the neighbouring borough of Ipswich with an indicative development of approximately 450 dwellings which links directly to the land in the parish and provides the vital access for the development to proceed. The likely timeframe for construction to commence is late 2025 with a potential end date around 2030. This area is identified in Appendix Four.

3.5 Environmental issues to consider in order to support and enhance biodiversity

- i. Actions of Council Members, Staff and Contractors including Sustainable Travel
- ii. Procurement Policies
- iii. Energy Use
- iv. Water Management
- v. Waste & Recycling
- vi. Managing Council Owned Land – Maintenance, Use of Pesticides etc.
- vii. Interaction and Liaison with Neighbouring Authorities and Landowners
- viii. Working with Developers on Housing Projects
- ix. Influencing Actions of Residents
- x. Climate Change
- xi. Awareness and Protection of Existing Flora, Fauna and Habitats.

3.6 Actions of Council Members, Staff and Contractors

- i. Ensure members, staff and contractors are aware of their part to play in maintaining the protection of the natural environment. Question the method of travel, car-sharing, working from home etc. Use of hybrid or electric vehicles. Organisation of tasks to avoid duplicate responses for contractors.
- ii. Current national policy is that council meetings are to be held in person. Where possible, encourage working groups and meetings between officers and councillors to take place on-line.
- iii. Encourage council activity to be on-line. Use of emails. Agendas and details to be available for download rather than printing.

3.7 Procurement Policies

- i. Support local retail outlets. Engage contractors from within a small radius of the parish. Where possible avoid on-line purchases. Consider the “product mileage” when looking to purchase goods (from manufacture, transit and eventual doorstep delivery).
- ii. Use of paperless transactions and on-line banking, postal services etc.



3.8 Energy Use

- i. Encourage staff to reduce energy consumption. Switch off lights and equipment where possible. Avoid chargers left on overnight etc. Use of LED lights in buildings. Use of timing and/or pir devices to switch lighting to minimal use.

3.9 Water Management

- i. Encourage use of less water. Use of watering cans rather than hosepipes at the Cemetery. Use of water butts and tanks at the Allotments.
- ii. Check for, and report leaks as a matter of urgency.

3.10 Waste and Recycling

- i. The parish council has a well-developed waste management strategy. The parish office mainly produces paper waste, limited “domestic” waste, and small amounts of cardboard etc. A very high percentage is recycled.
- ii. Additionally, the parish council is responsible for dealing with various forms of waste from the public. Numerous litter and “fido” bins are provided. Contractual arrangements are well-established for the removal of this waste by the local authority.
- iii. The parish council has engaged a handyman who clears litter from play areas and locations within the parish such as amenity seating areas, bus shelters etc. Collected waste is disposed of using the same local authority contractors.
- iv. From time to time the council supports “litter-picks” organised by other within the parish. Equipment and high-viz vests etc is held by the parish.

3.11 Managing Council Owned Land – Pesticides etc

- i. It is council policy NOT to use any form of insecticides or pesticides etc. A few very limited exceptions may be considered to deal with specific issues.
- ii. Contractors engaged by the parish to work on council owned land are aware of the parish council approach to biodiversity. For example, winter (seasonal) trimming of hedgerows etc must be completed before the end of March and not recommenced until November in that year.
- iii. Council sponsored work to clear and maintain areas of vegetation, prune trees etc must be carried out to avoid collateral damage.
- iv. The council will develop a management policy for all council owned parcels of land. This will include identification of species including any requiring special protection.



3.12 Interaction and Liaison with Neighbouring Authorities and Landowners

- i. The Parish of Rushmere St Andrew does not sit in isolation in terms of biodiversity. East Suffolk Council, through its Environmental Forum continues to develop the notion of “Green Corridors.
- ii. The council recognises the part it has to play in the Greener Waldringfield Project
- iii. The council will coordinate with the “Bee Corridor” project
- iv. The council has a representative on the Rushmere Commoners Committee.
- v. Collaboration with East Suffolk and Suffolk County Council occurs on a continuous basis particularly where parcels of land owned by those authorities occur within the parish.
- vi. The parish council works closely with the Greenways Project.

3.13 Working with Developers on Housing Projects

- i. Rushmere St Andrew Parish Council has a made Neighbourhood Plan (2022).
- ii. Within the Neighbourhood Plan(NP) is a section dealing specifically with environmental issues.
- iii. To the north of the parish where potential development land meets sections of Quiet Lanes there is a legally set obligation that no vehicular traffic from the proposed development enters the Quiet Lane system.
- iv. The parish council (in line with national policy) expects a net Biodiversity Plan (BP) gain of at least 10%.
- v. It is a policy of the parish through its NP that all new hedgerow systems should consist of native species.
- vi. The parish council expects to work directly with the developers to develop green pathways and corridors on the development and that these paths link with the existing green corridors within the parish.
- vii. The council expects to have sight of the ecology reports prepared prior to the commencement of any work on site.
- viii. Currently (Spring 2024) the council is represented at meetings with developers in order to ensure that the NP is adhered to.

3.14 Influencing Actions of Residents

- i. The council will comment and, where appropriate, add specific requirements when resolving planning applications citing the NP for reference.
- ii. The Tree Warden will advise residents with regard to the short-term and long-term protection of the environment.
- iii. The council will invoke Tree Protection Orders at all locations.
- iv. The council will keep a watchful eye across the parish and respond to reports of unwelcome actions such as “fly-tipping” of garden waste and grass cutting etc.
- v. The council will promote the importance of flora and fauna through activities such as signposted walks, tree trails etc.



3.15 Climate Change

- i. Rushmere St Andrew Parish Council recognises the challenges posed by Climate Change.
- ii. The council itself will obey regulations set at national and local level to mitigate the negative effects of climate change.
- iii. The council will encourage residents to consider all their activities as to how they may be contributing to climate change and, in turn, advise alternative practice.

3.16 Awareness and Protection of Existing Flora, Fauna and Habitats

- i. Rushmere St Andrew Parish Council is responsible for the upkeep of a number of sites in the parish. Habitats vary from short cut grass in play parks to significant tree belts on parish owned land. Recent planting of native species hedgerows has added to the existing habitats. Recorded within the parish are Fox, Badger, Squirrel, Muntjac Deer and a variety of rodents. The ponds support a healthy stock of Moorhen, Coot and Mallards with occasional visits from Kingfishers and Heron. One of the ponds has a very healthy stock of goldfish.
- ii. Tree species include a significant number of Oak, Elm, Silver Birch, Willow, Lime, Chestnut and Sycamore. Within the parish there are a small number of rare Black Poplars.

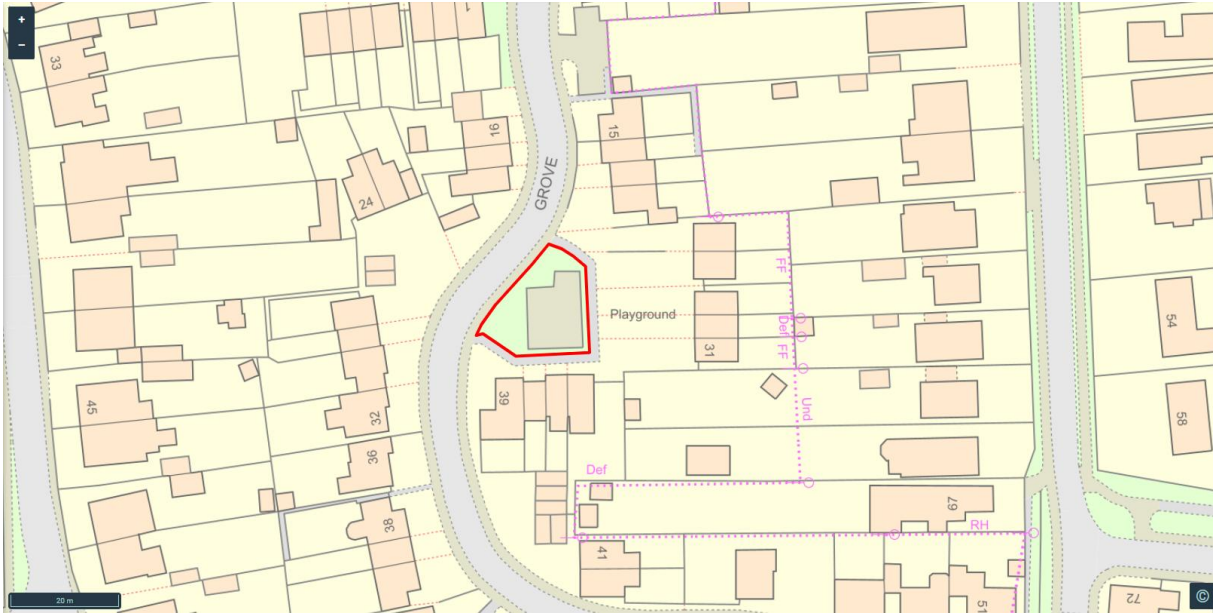
4. BIODIVERSITY PLAN

- 4.1 Rushmere St Andrew Parish Council will develop a biodiversity plan to sit alongside this policy. The aspirations of those who contributed to the Neighbourhood Plan are noted. In line with national aspirations the council looks to aim for a 10% plus biodiversity gain.



APPENDIX ONE: MAPS TO IDENTIFIED LAND OWNED BY RUSHMERE ST ANDREW PARISH COUNCIL

Yew Tree

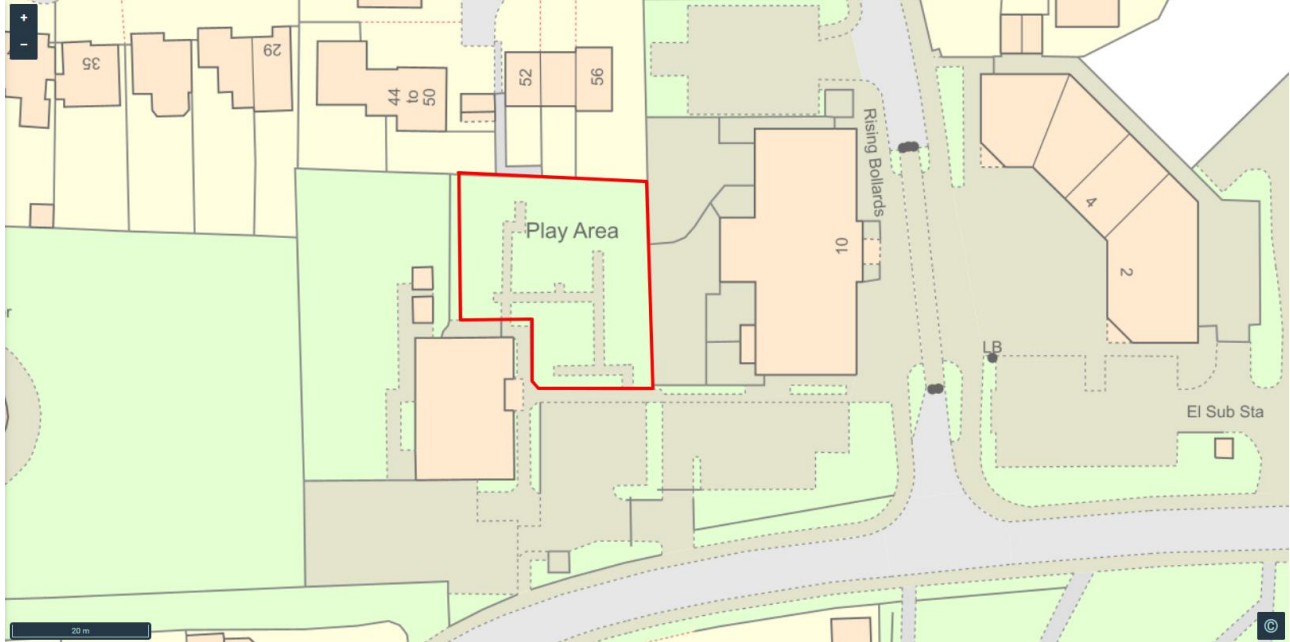


Chestnut





Tower Hall

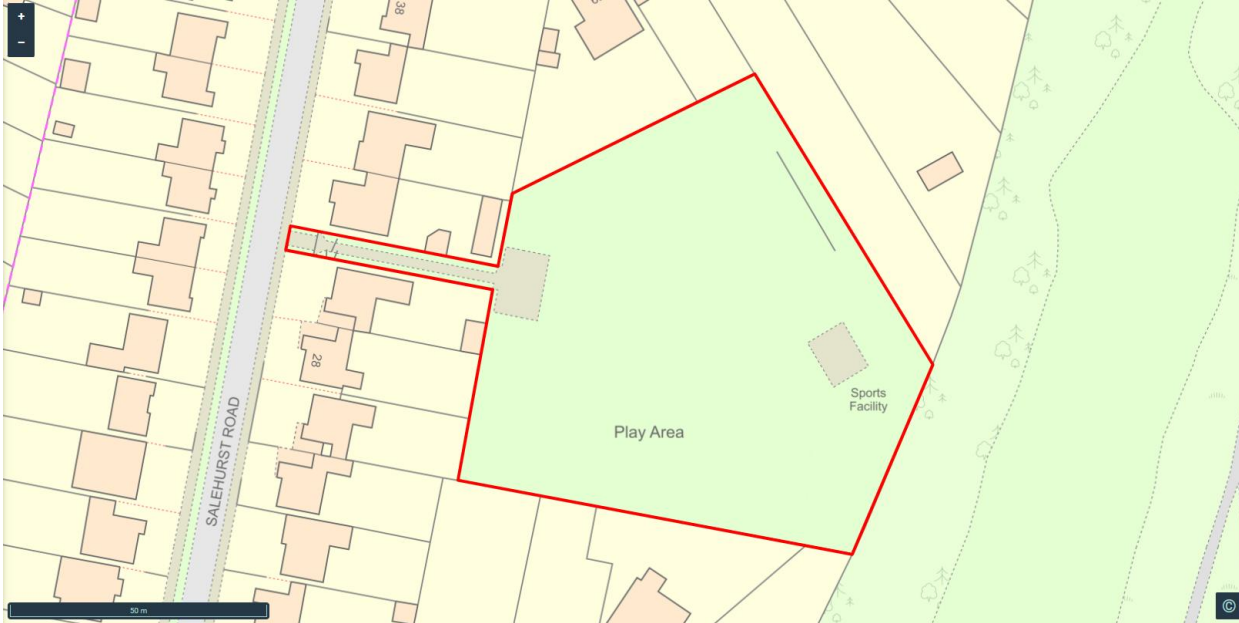


Kevelton





Brokehall



Lawn Cemetery

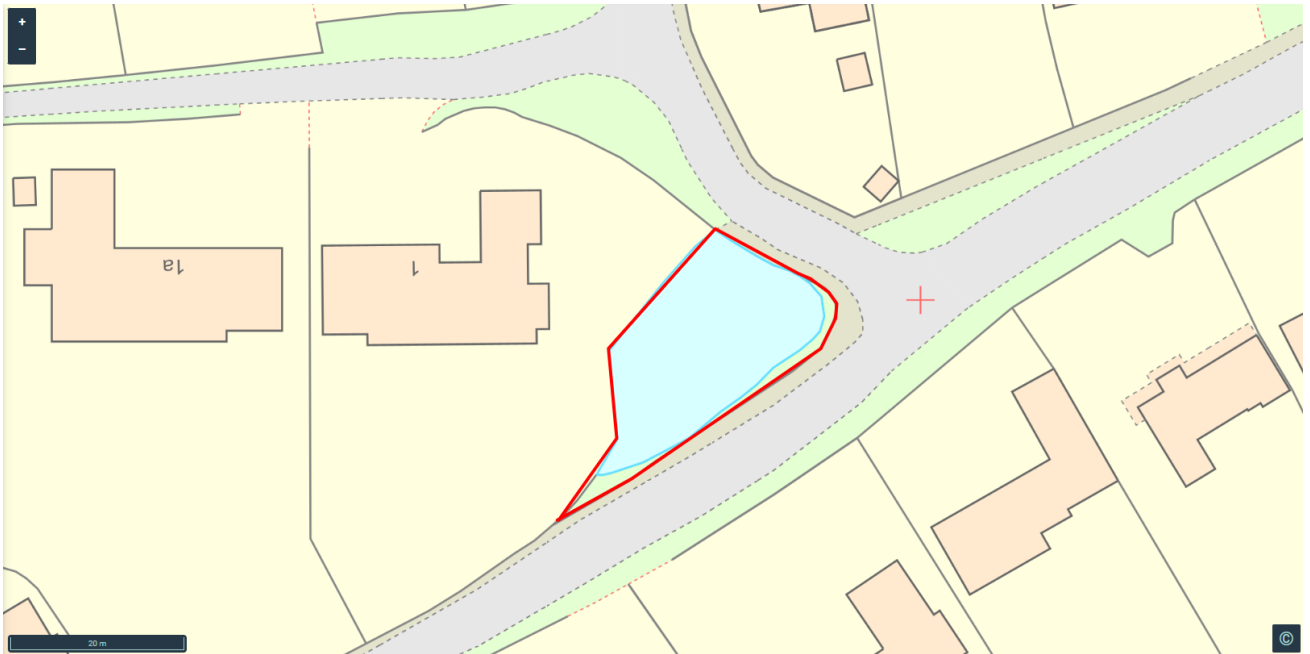




The Street Allotments

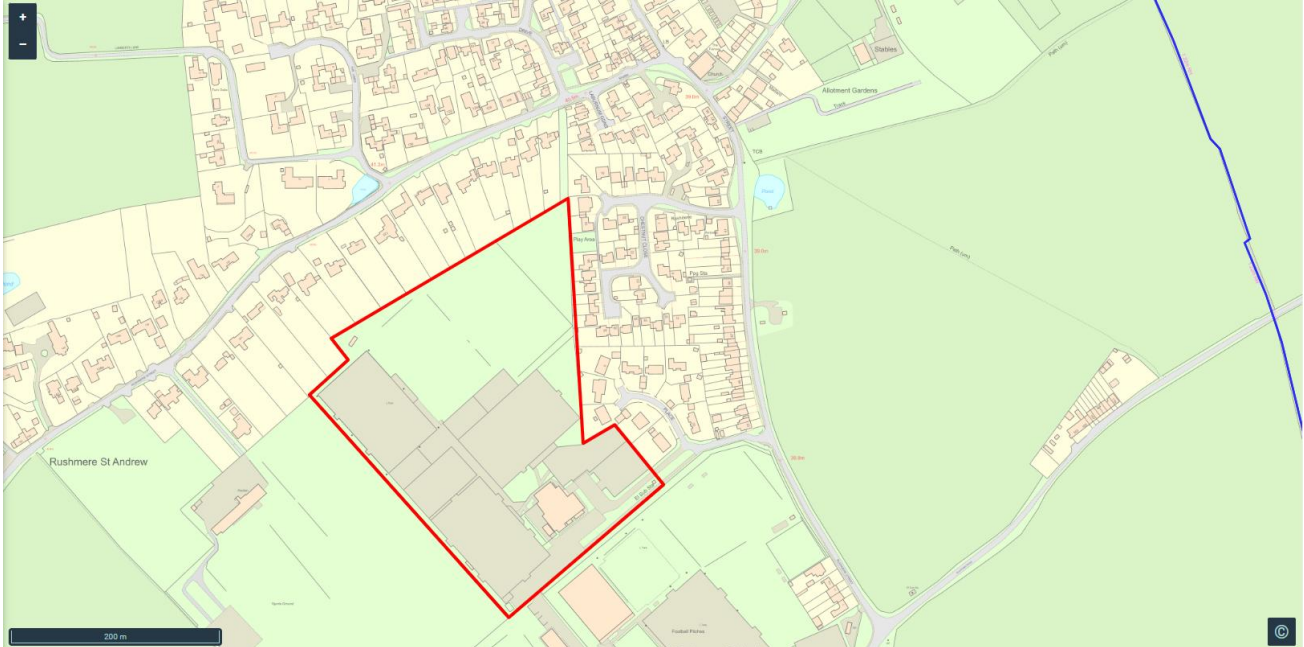


Limes Pond

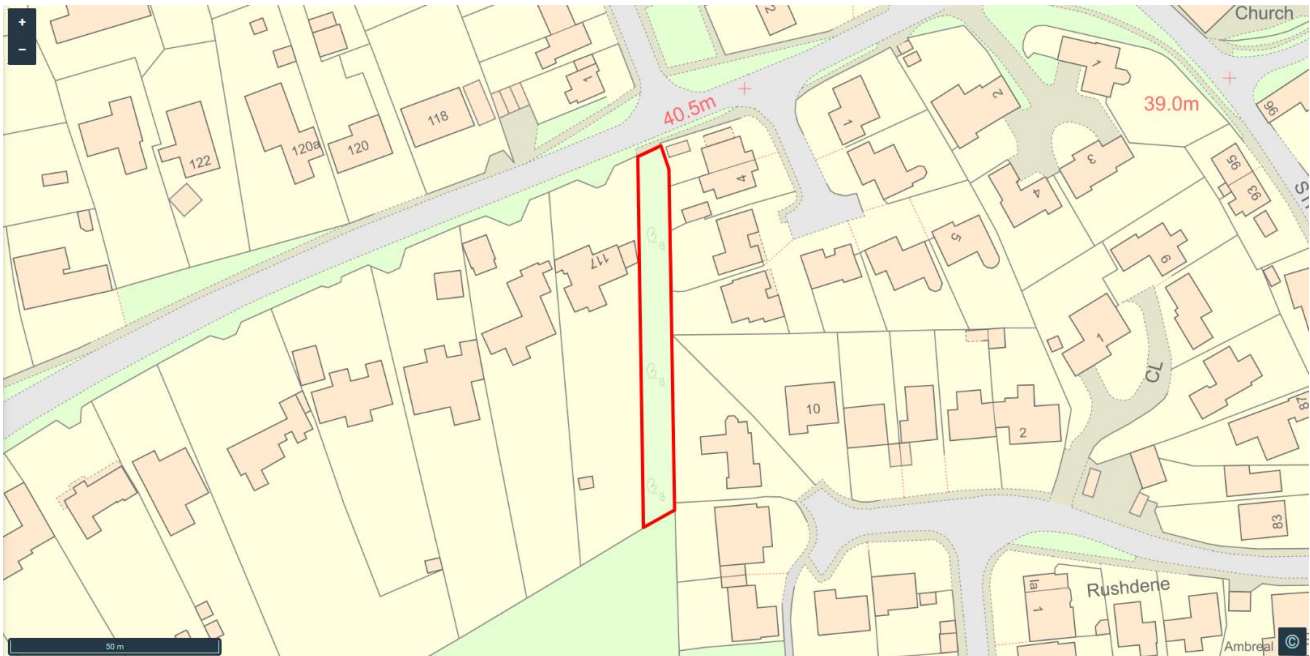




Ipswich Sports Club



The Street Wildlife Strip

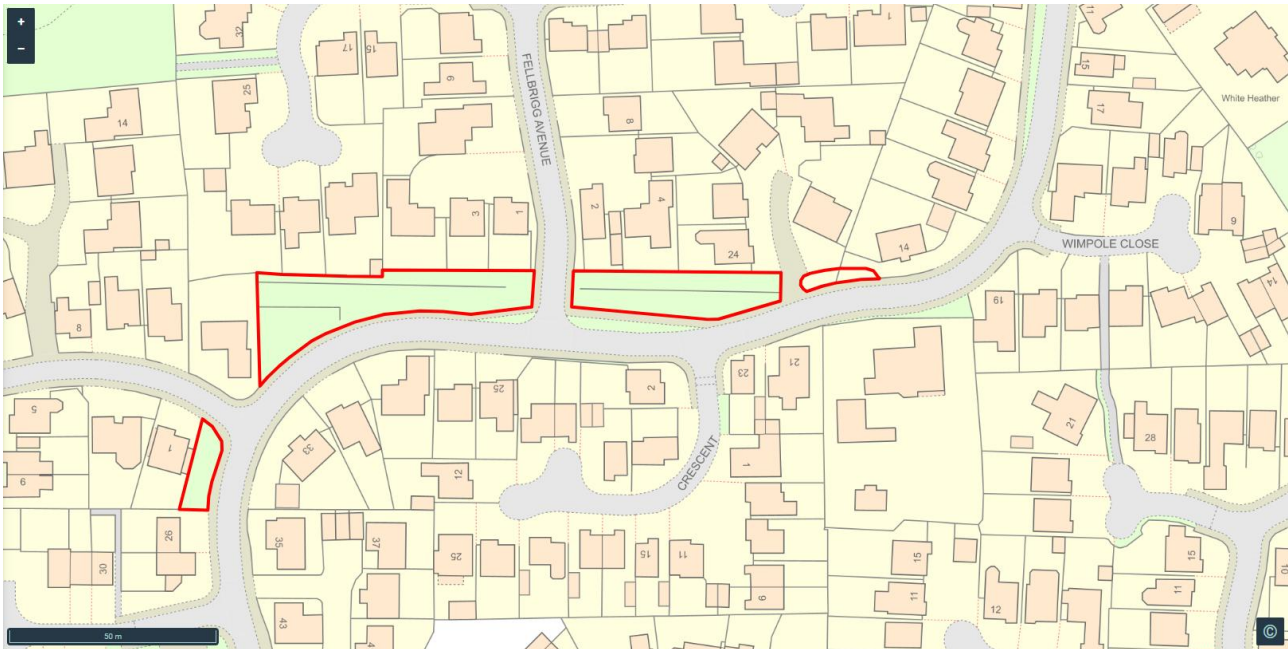




Woodbridge Road

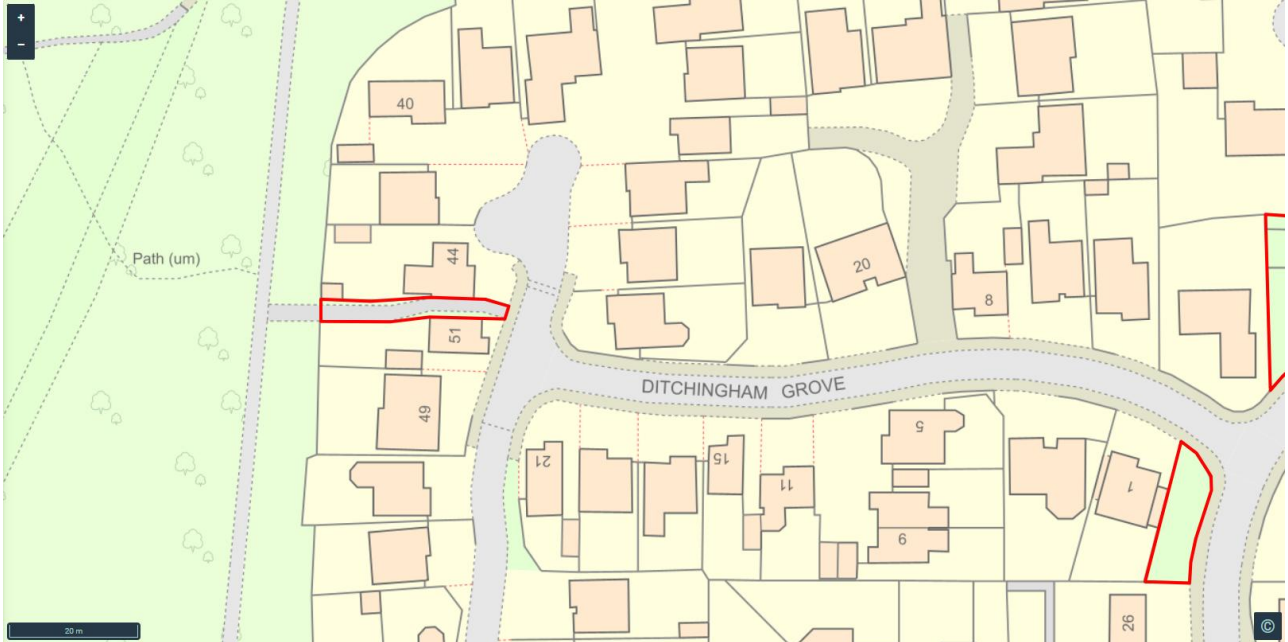


Brendon Drive





Ditchingham Grove

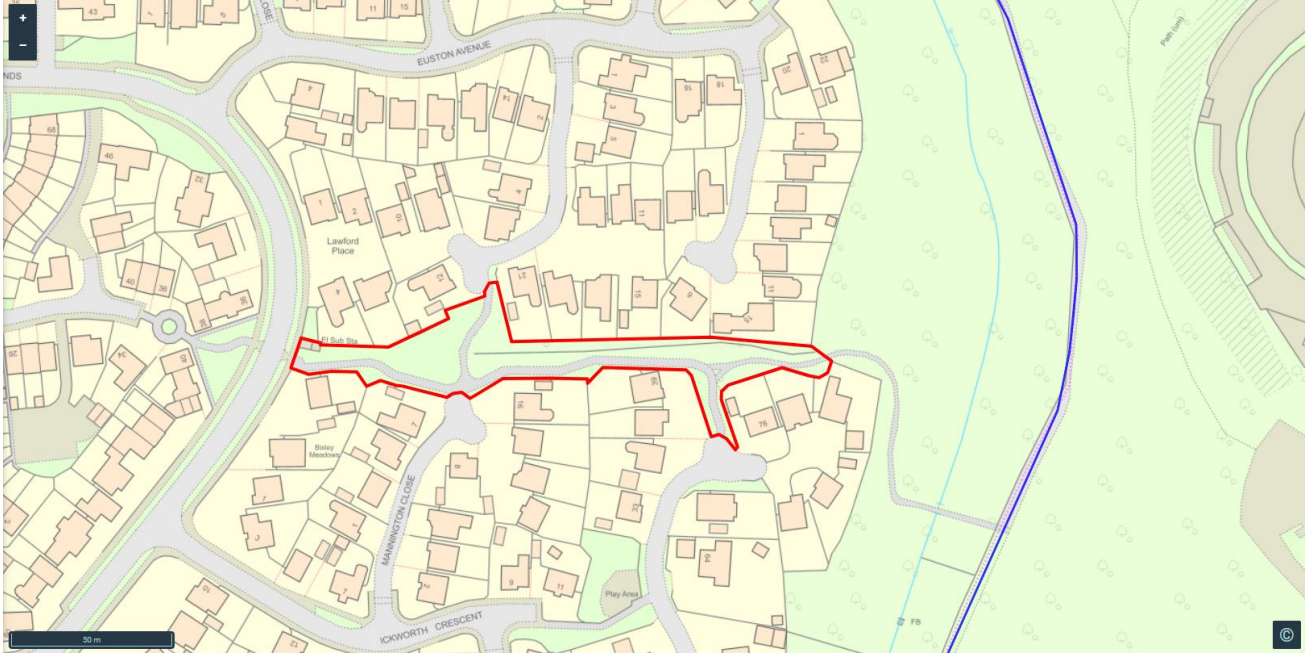


Wimpole close to Haughley Drive

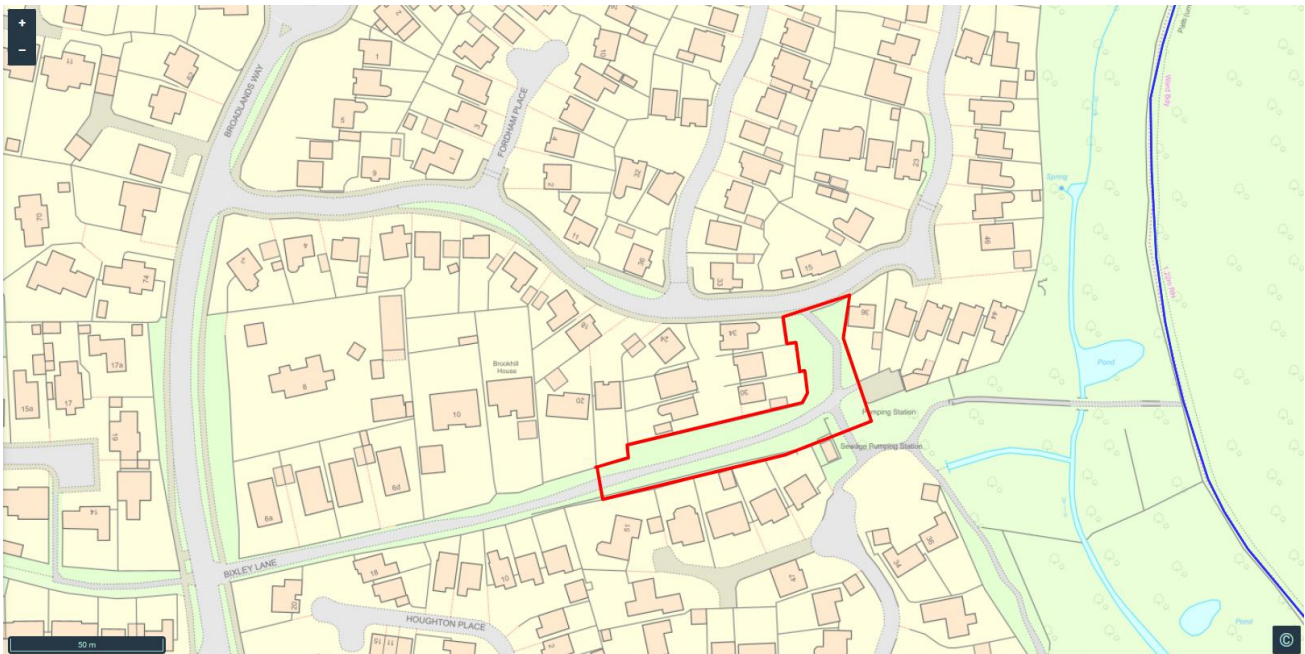




Broadlands Way Mannington Grove



Bixley Lane Kelvedon Drive

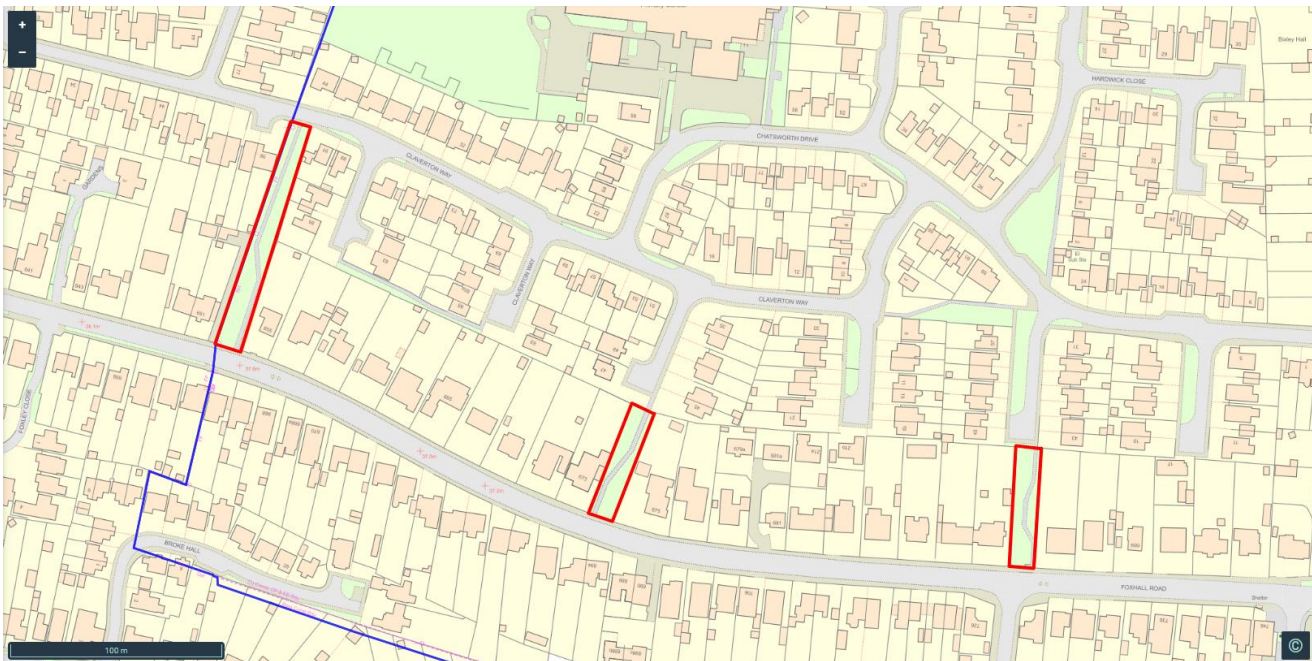




Hardwick Close

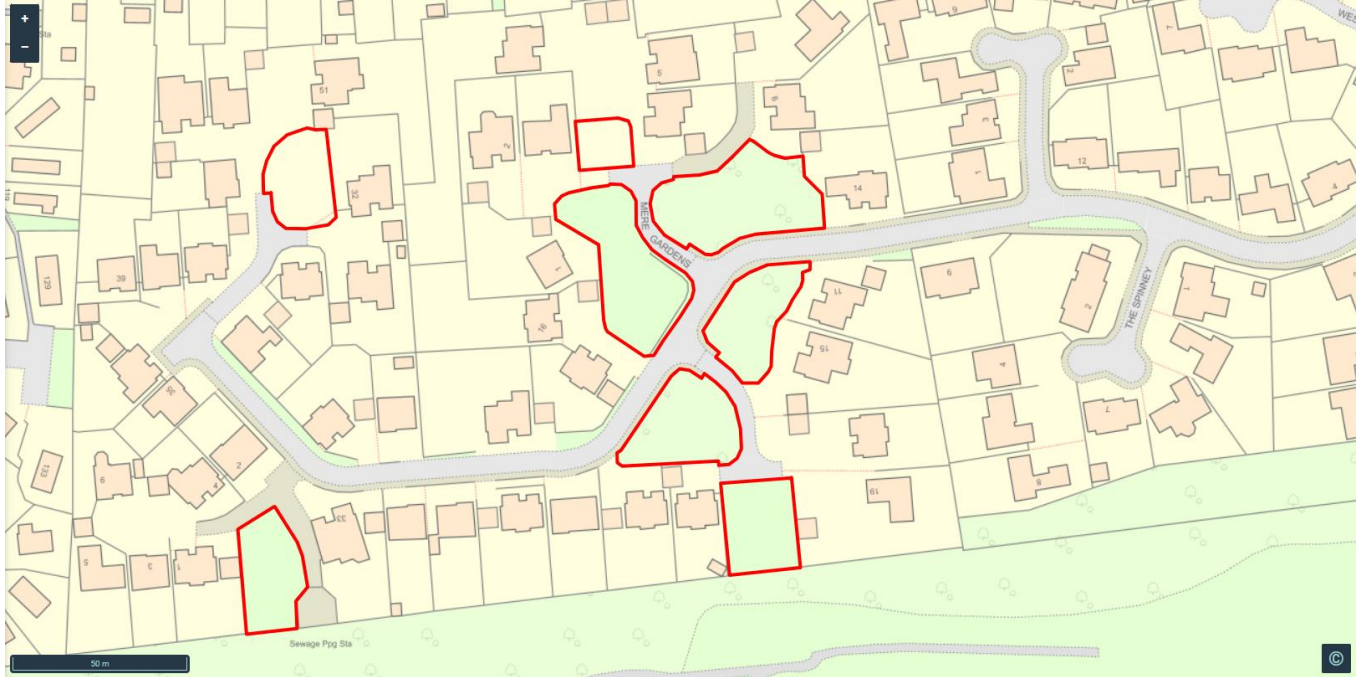


Foxhall Road





Brookhill Way

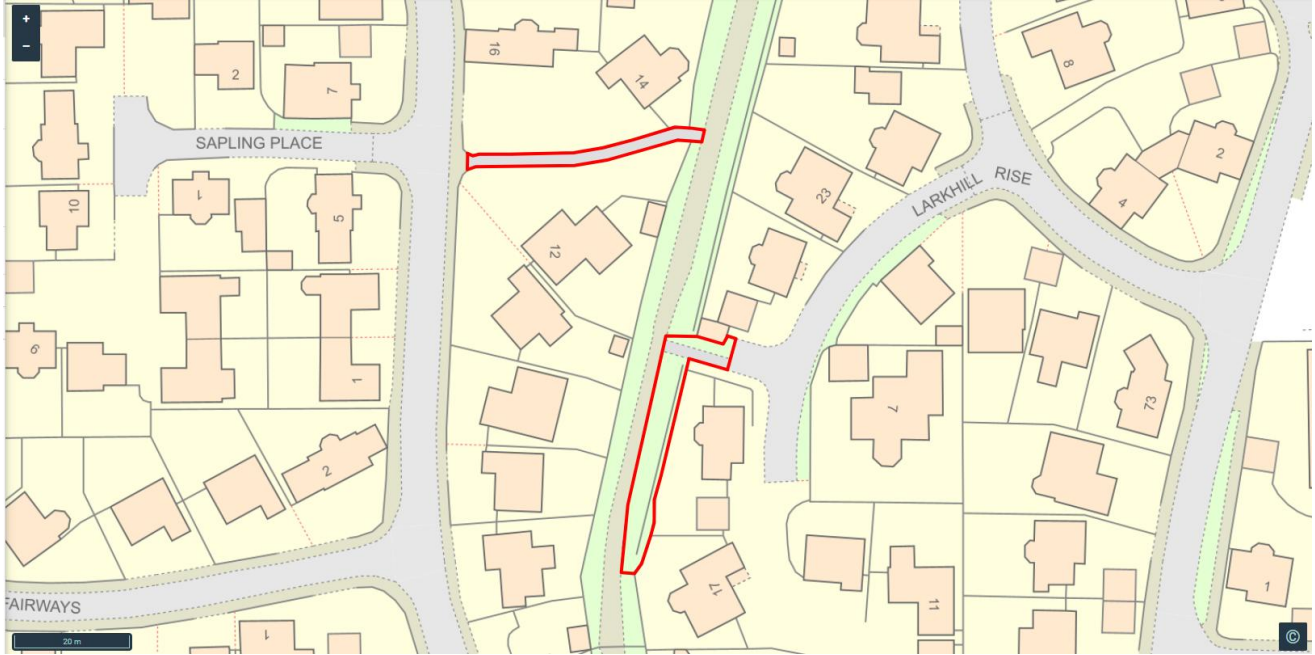


Water Tower Lane

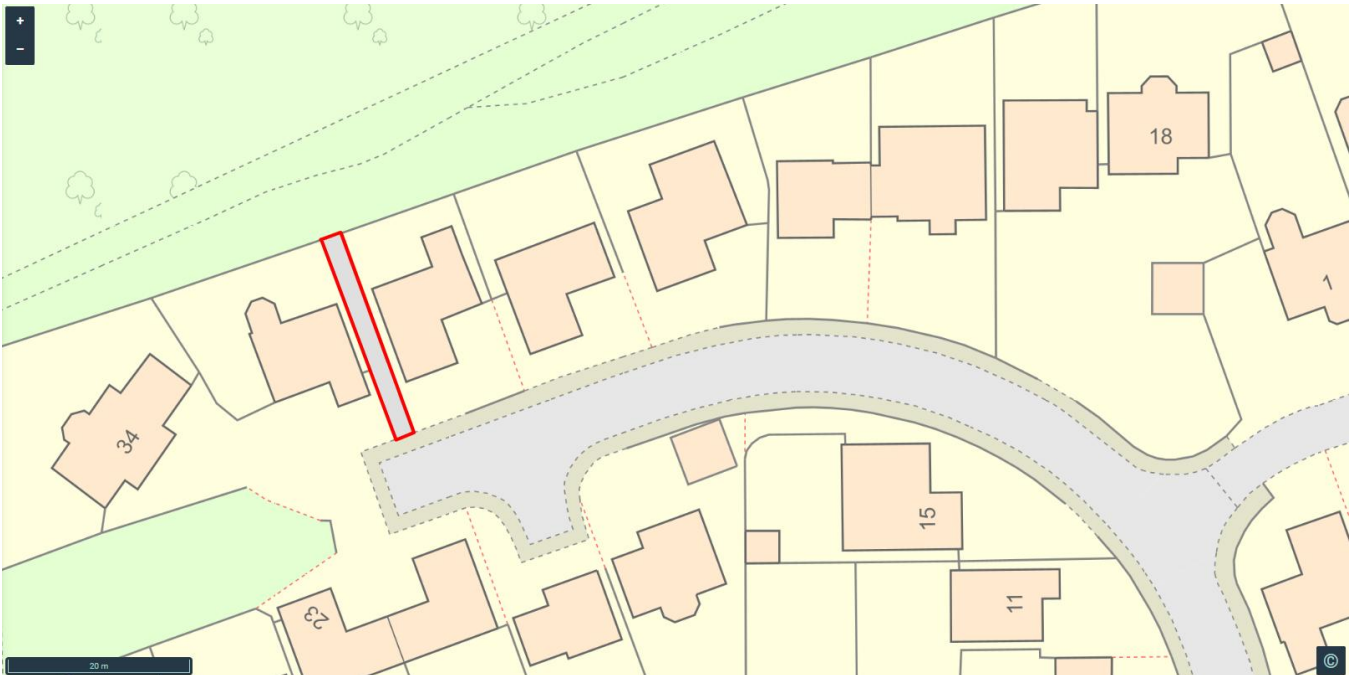




Larkhill Rise and Sandlings Crescent



Sandlings Crescent

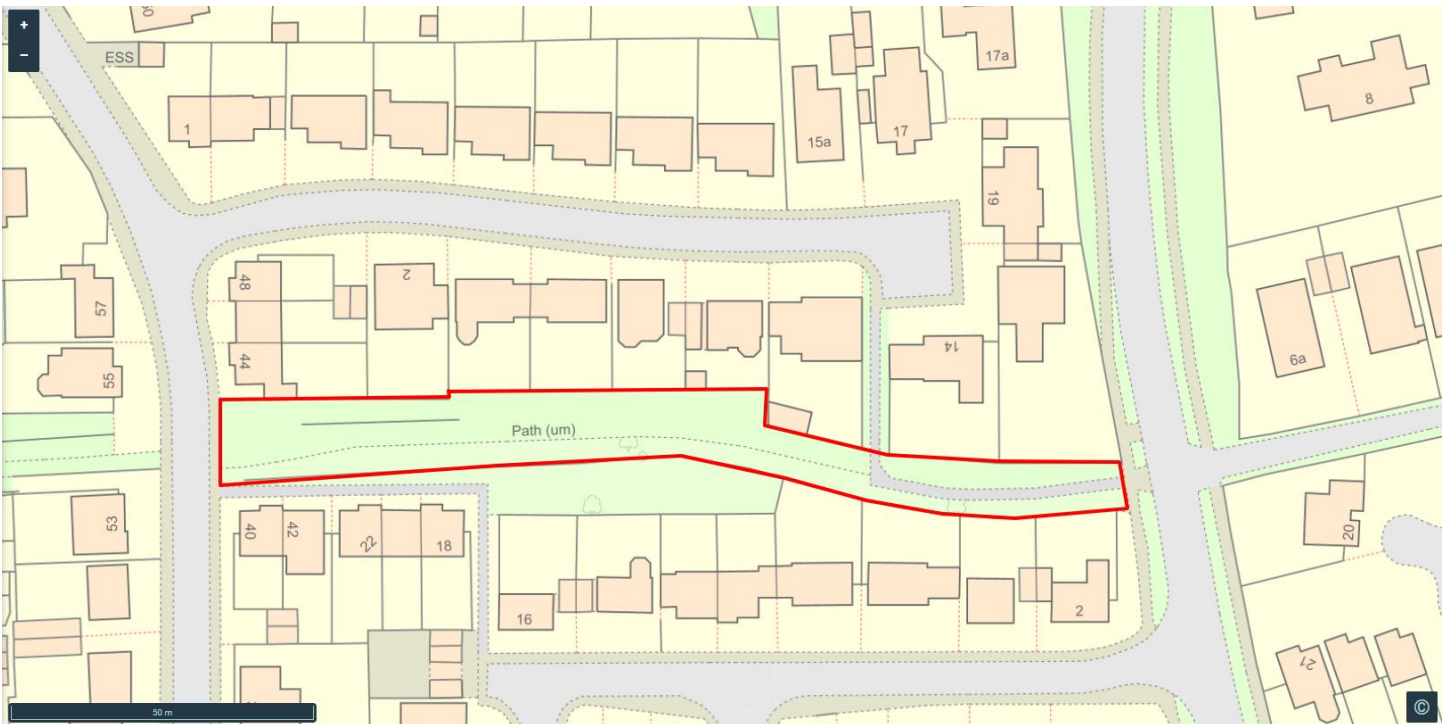




Pardoe Place



Bixley Lane



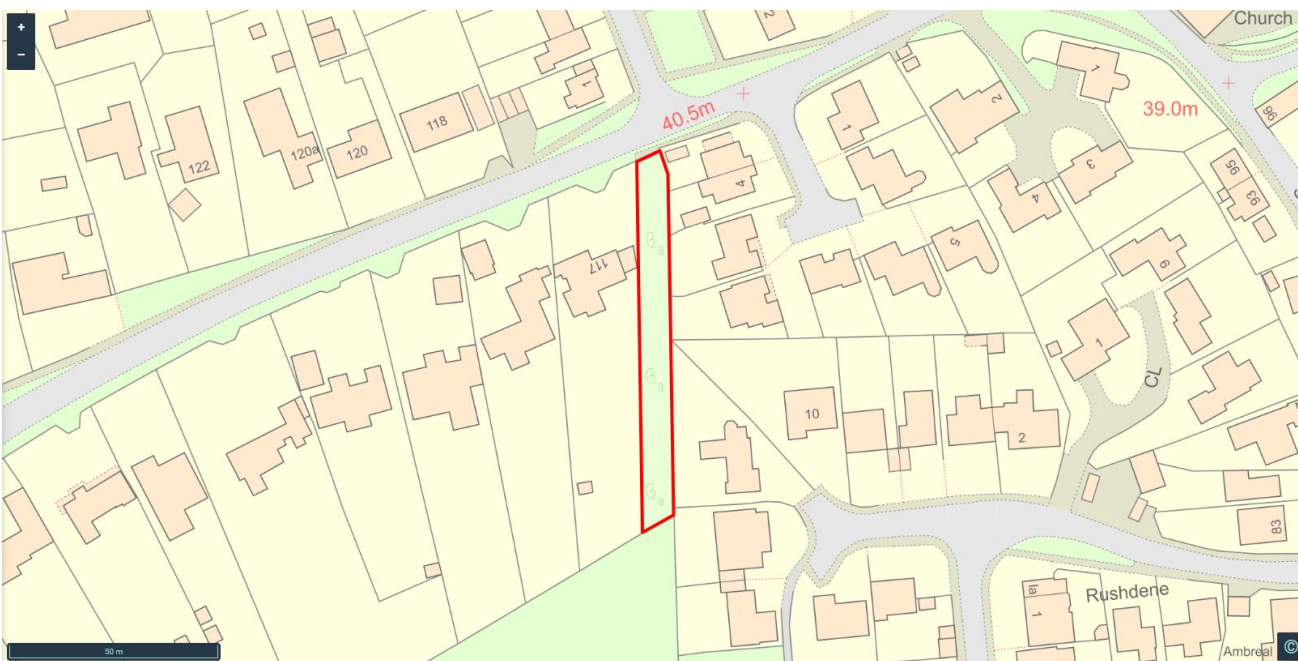


APPENDIX TWO: MAPS OF AREAS OF LAND WITH REWILDING

Woodbridge Road



The Street Wildlife Strip





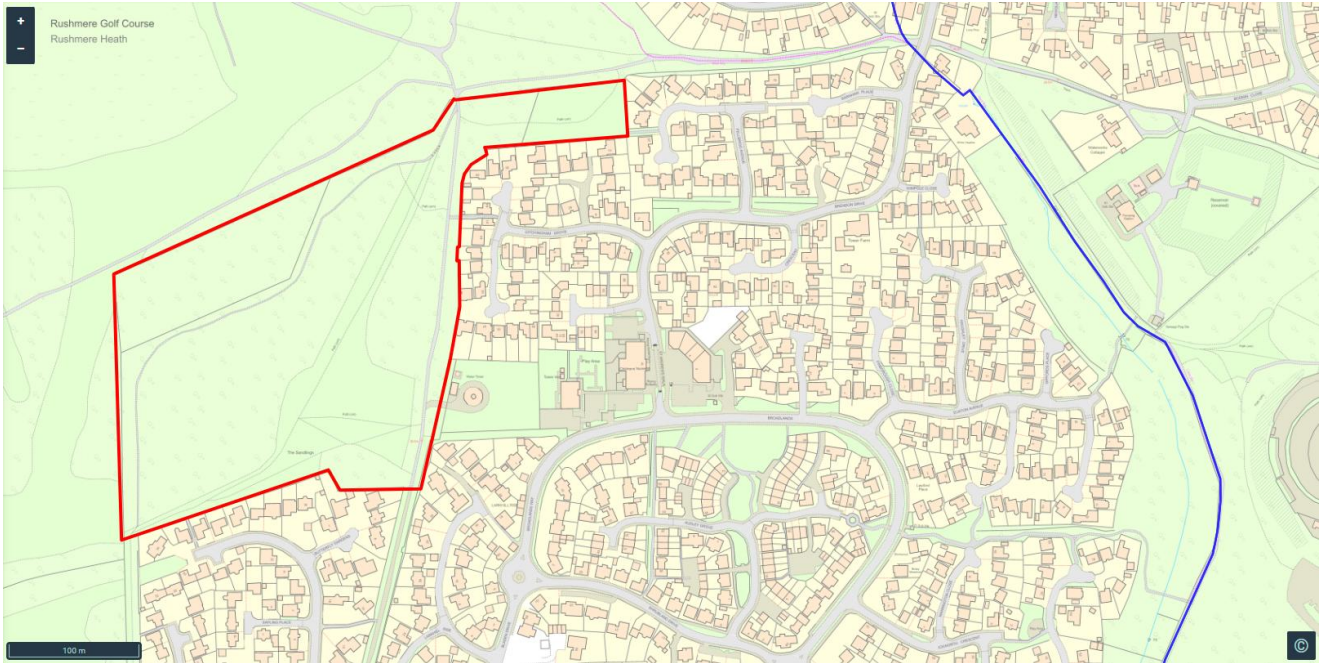
Land Opp Baptist Church



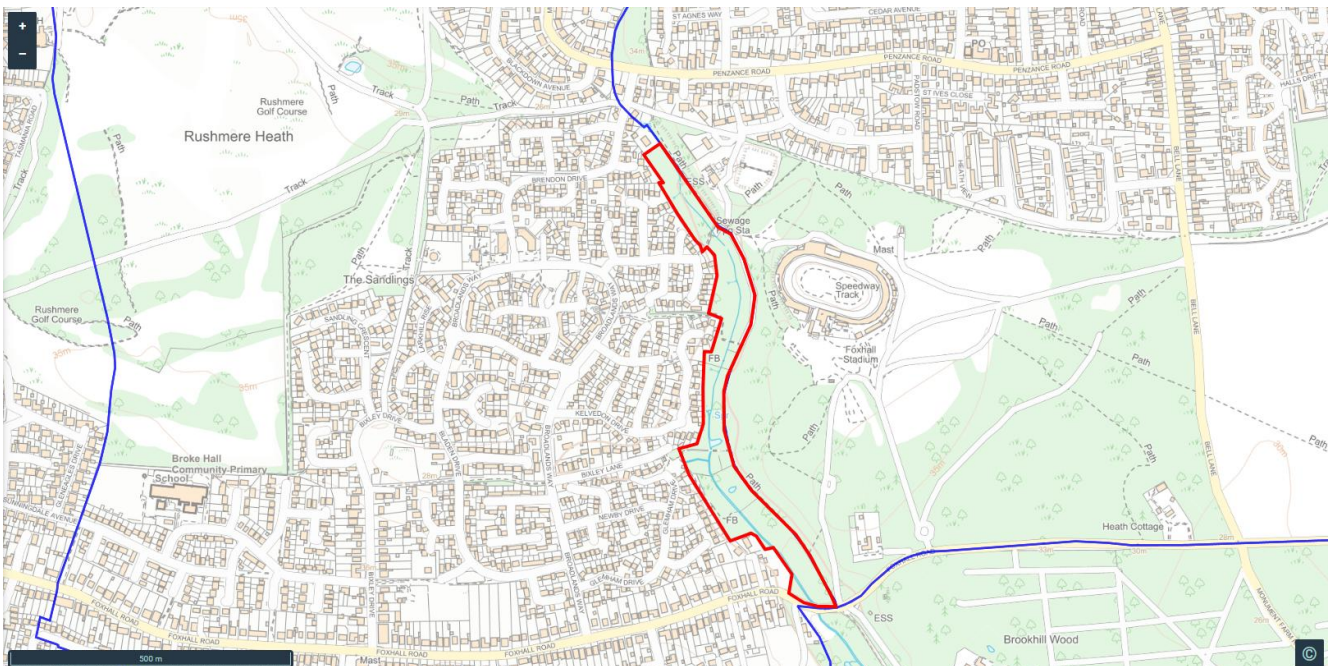


APPENDIX THREE: BORDER MAP OF THE SANDLINGS AND MILLSTREAM NATURE RESERVE

The Sandlings



The Millstream





APPENDIX FOUR: MAP OUTLINING OF HUMBER DOUCY LANE DEVELOPMENT

